

PRODUCT GUIDE
- SELF CONTAINED HYDRAULIC PUMP -
Low Pressure (WCSCLP)



EXPECT QUALITY AND RELIABILITY

using our brand name

SELF CONTAINED HYDRAULIC PUMP (WCSCLP)

~ WARRANTY AND EXCHANGE PROGRAM ~

Version 3.0

Head Office:



7596 Wagner RD NW
Edmonton , Alberta CANADA T6E 5B2
info@weirusa.com / www.weirusa.com

1.866.462.1910 Toll Free
780.462.1910 ph | 780.462.1959 fax



DOMESTIC PRODUCTS MADE IN NORTH AMERICA
Details are the difference between ordinary and EXCELLENCE



Each WC-SCLP unit is
frozen and tested for a
MINIMUM of 24 HOURS
to -22°F

LP SELF CONTAINED HYDRAULIC PUMP

- SELF GENERATING POWER SOURCE
- AUTOMATIC SHUTDOWN STANDARD
REMOTE ESD OPTIONAL
- COMPATIBLE WITH ACTUATORS
QUARTER TURN BALL / PLUG OR
BUTTERFLY
- DESIGNED FOR REMOTE LOCATIONS
- GUARANTEED SHUTDOWN
OPERATION RESERVOIR
- SUCTION FILTER

SELF CONTAINED HYDRAULIC EMERGENCY SHUTDOWN SYSTEM

STANDARD Range -40 to 176F

OPTIONAL Range -58 to 212F

INSTALLATION

1. Mount the Weir hydraulic system securely to the actuator or to the flow line.
2. Tube the actuator and line monitoring pilot as per schematic diagram provided.
Port H - Actuator & Pilot Supply/Port S - Pilot Signal/Port V - Pilot Exhaust
3. Fill the tank with clean low temperature hydraulic fluid.
4. Flip manual arm lever to allow system to bypass switches or solenoid.
5. Pump WC-Hydraulic Pump until the actuator is completely open. If the actuator does not fully open add oil as required.
6. Continue pumping until the gauge on the pump reads 100 psi.
7. Check the manual override latch. If the line monitoring pilot is within its set range the latch will be in an automatic mode. With the latch full extended from the valve body the latch should move freely. If the latch is still in its manual locked position, the line monitoring pilot is in a high or low pressure condition.

Solutions for your company needs

WC-LP SELF CONTAINED HYDRAULIC PUMP

Manual Latch Mode

1. When the actuator is open **do not leave the latch in the manual position without a signal from the line monitoring pilot.** The relay is **not** armed and unable to close the actuator.
2. To close actuator while in the manual latch mode push latch in until the latch disengages and releases.
3. To close the valve actuator in the automatic condition, bleed down the line for the monitoring pilot signal. If an isolator valve is installed block and bleed line sensing signal.
4. To re-open the actuator, follow steps 1 - 7 & 1 from Manual Latch Mode.
5. Full open and then cycle the actuator to purge any air in the system and ensure proper operation.
6. System should be cycled once a month to ensure proper operation.

RECOMMENDED MAINTENANCE

Weir recommends the system be cycled at least once a month.

At least once a year the fluid must be drained from the tank and replaced with clean low temperature hydraulic fluid. Complete this process while the actuator is in the closed position. Autumn months are preferable as this will drain any condensation that may have accumulated in the reservoir.

IF SYSTEM WILL NOT MAINTAIN PRESSURE

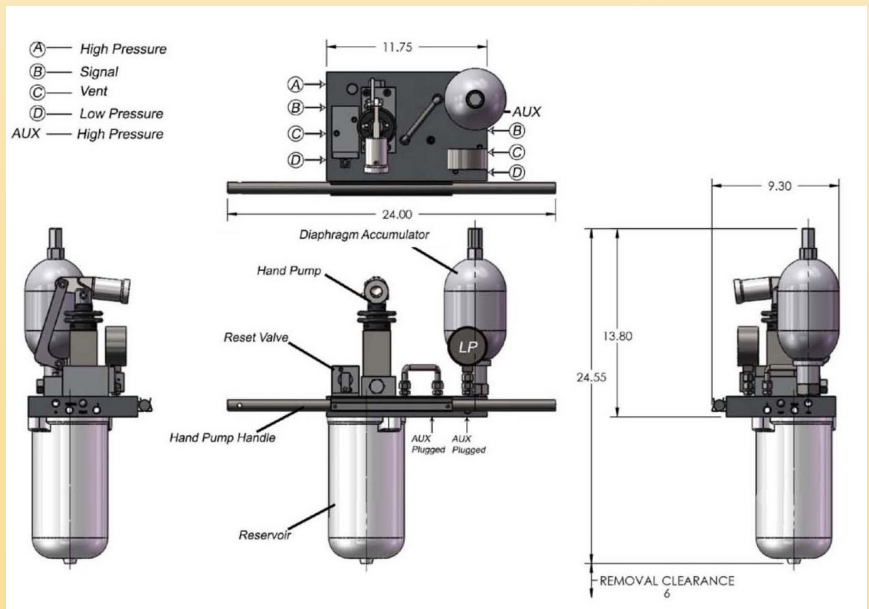
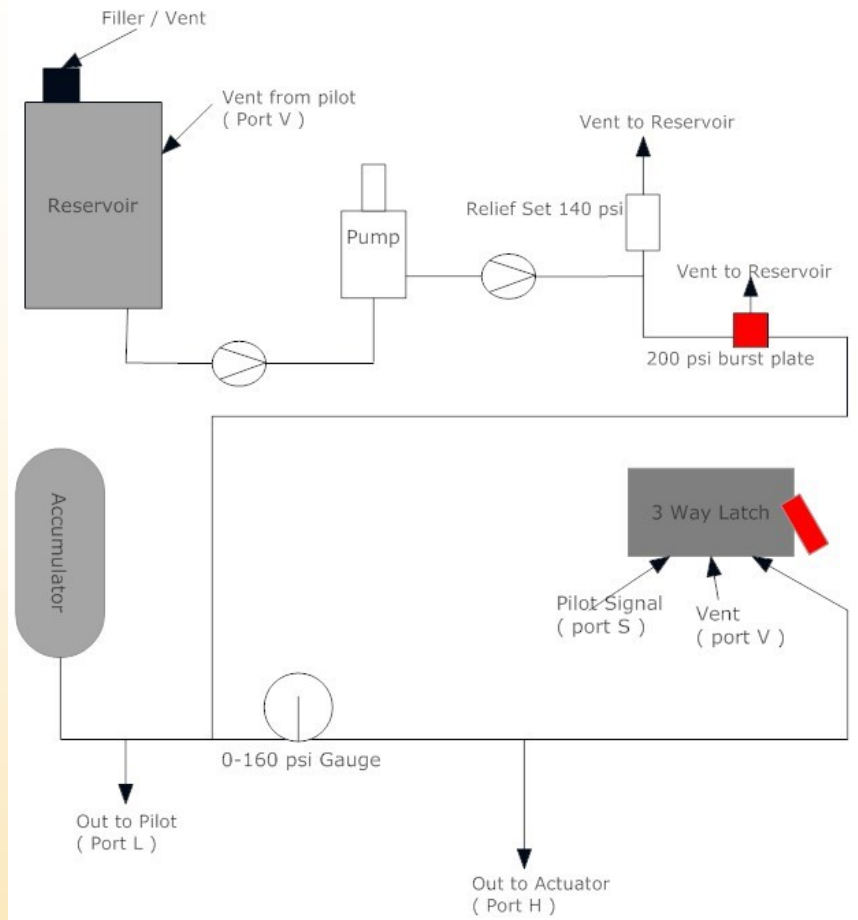
1. Check all tubing connections.
2. Drop tank and look for relief leaks.

If leakage continues to occur contact Weir's Tech support.

**DOMESTIC PRODUCTS
MADE IN
NORTH AMERICA**

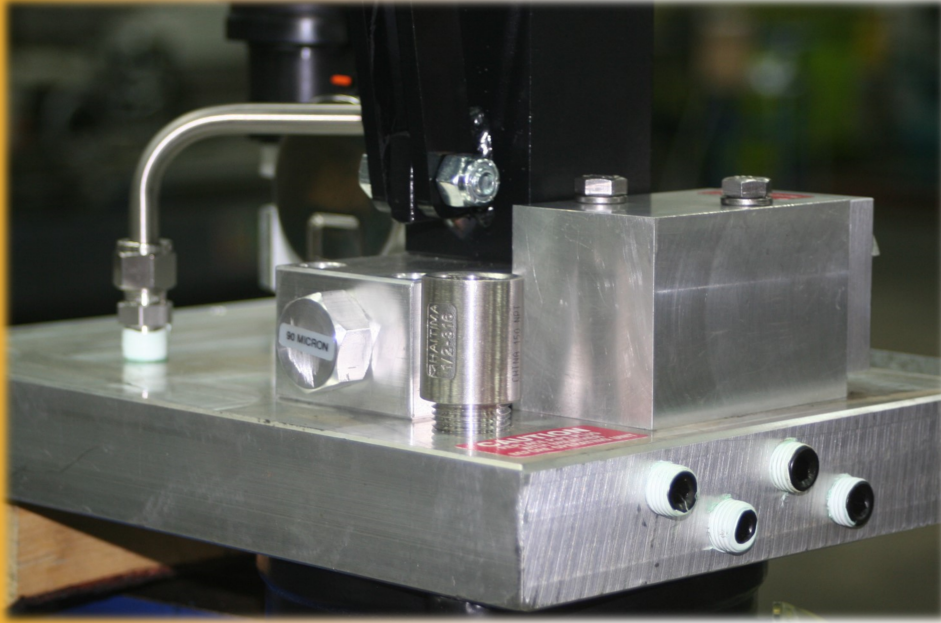


LP SELF CONTAINED HYDRAULIC SHUTDOWN SYSTEM SCHEMATIC



PRODUCT GUIDE

WEIR CONCEPTS SELF CONTAINED HYDRAULIC PUMP (WCSCLP)



SOLUTIONS FOR YOUR COMPANY NEEDS - WORLD WIDE SHIPPING



- HELP DESK -

FOR YOUR SUPPORT AND SERVICE

24 hours a day, 7 days a week

NO CHARGE ON CALLS SERVICE

We offer technical assistance, product knowledge, and reliable trouble shooting

Brochures/Maintenance info available online www.weirusa.com



Head Office:

7596 Wagner RD NW

Edmonton, Alberta CANADA T6E 5B2

info@weirusa.com / www.weirusa.com

1.866.462.1910 Toll Free

780.462.1910 ph | 780.462.1959 fax