

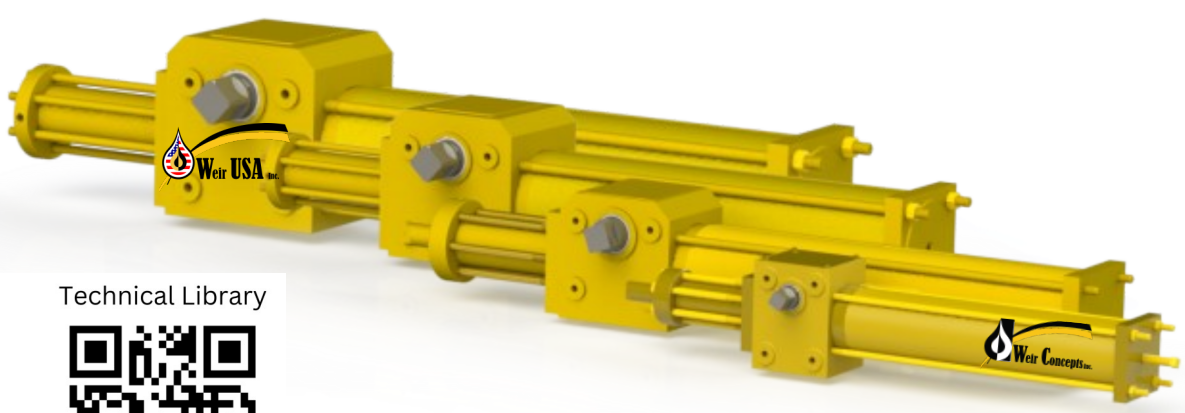


# PRODUCT GUIDE

## WCM HYDRAULIC ACTUATORS SERIES

- WCM35 / WCM50 / WCM60 / WCM70 -

### IMPROVEMENTS



Technical Library



~ WARRANTY AND EXCHANGE PROGRAM ~

 [www.weirusa.com](http://www.weirusa.com)  
**SCAN ME** 

Version 3.0



**Head Office:**



7596 Wagner RD NW  
Edmonton , Alberta CANADA T6E 5B2  
[info@weirusa.com](mailto:info@weirusa.com) / [www.weirusa.com](http://www.weirusa.com)

1.866.462.1910 Toll Free  
780.462.1910 ph | 780.462.1959 fax

**DOMESTIC PRODUCTS MADE IN NORTH AMERICA**  
**Details are the difference between ordinary and EXCELLENCE**

## Weir offers technical consulting and provides a total end to end solution.

**WCM50 AND WCM35 HYDRAULIC ACTUATORS** Drive cases made from durable, light-weight cast aluminum come standard. Ideal for low temp and sour service conditions

### FEATURES - design improvements

1. Partial Nemur pad for limit switch installation
2. Bolted toggle latch for ease of repair
3. Travel stop cap provides static seal eliminating thread leaks
4. Two flats on drive shaft to allow for re-orientation of actuator without new hardware
5. One piece of solid Delrin guide:
  - Eliminates piston rod slack allowing for smoother operation
6. O-ring piston seals have a longer piston life and are simple to replace.

### QUALITY AND PERFORMANCE TESTED

Each WCM35 and 50 is frozen and tested for a **MINIMUM** of 24 HOURS to -22°F

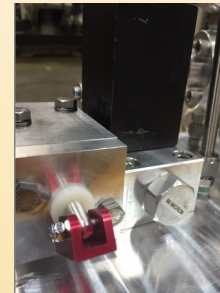
Feature #1



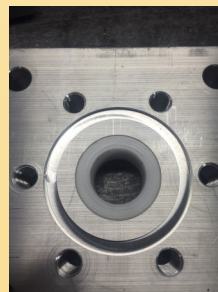
Feature #2



Feature #3



Feature #4



Features #5 and #6

**CALL US TODAY** 24 hours a day, 7 days a week