

# INSTRUCTIONAL & MAINTENANCE MANUAL

## WEIR USA INC. WC-CF SERIES PNEUMATIC ACTUATOR



On Site  
Help Desk

#WEIRHERE

CONTACT NOW 24/7

toll free 1.866.462.1910

info@weirusa.com

www.weirusa.com



 [www.weirusa.com](http://www.weirusa.com)  
**SCAN ME** 

**Head Office:**



7596 Wagner RD NW  
Edmonton, Alberta CANADA T6E 5B2  
[info@weirusa.com](mailto:info@weirusa.com) / [www.weirusa.com](http://www.weirusa.com)

1.866.462.1910 Toll Free  
780.462.1910 ph | 780.462.1959 fax

**DOMESTIC PRODUCTS MADE IN NORTH AMERICA**

**Details are the difference between ordinary and EXCELLENCE**

## 1. Summarize

The instruction manual for CF series scotch yoke pneumatic actuators for all models of CF14, CF16, CF25, CF30, CF35, CF40, CF48, CF60.

## 2. Technical & Application Data

Low temperature actuator: -40 to 176F

High temperature actuator (Optional): -4 to 248F Operating Pressure:

Pneumatic Input Pressure Range: 3-7 Bar

Output Torque:

Spring Return: 300-71700Nm

Double Acting: 830-226,000Nm

Operating Media: Dry and clean compressed air

## 3. Handling and Lifting

**NOTE: Only trained and experienced personnel should handle/lift the actuator**

### 3.1 Lifting Recommendations

3.1.1 Use industry standard practices as it pertains to suitability rated lifting devices, slings and chains that are safe for use.

3.1.2 Do not lift the actuator and valve combination using the actuator lifting lugs only

### 3.2 Lifting Instructions

3.2.1 Prior to lifting the actuator remove electrical power and pneumatic lines to ensure that the actuator is fully depressurized and powered down.

3.2.2 Use only main lifting lugs

3.2.3 Actuator must remain horizontal with the load balanced

## 4. Installation on the Valve

4.1 Actuator to be installed on valve directly using the actuator housing flange or more commonly using a mounting bracket and coupling with applicable fasteners.

**CALL US TODAY** 24 hours a day, 7 days a week

4.2 Actuator is supplied in the fail position (for single-acting). Install the valve in the correct position per the actuator fail position. Check the position of the actuator using position indicator on actuator body or limit switch (if applicable).

4.3 Ensure the mounting faces and all connection surfaces on the valve and actuator are clean and free of any debris.

4.4 Grease the coupling stem, bore and valve stem to facilitate assembly.

4.5 Lift the actuator according to handling and lifting instruction (Section 3)

4.6 Whenever possible, install with valve stem in a vertical position.

4.7 Do not exert additional force while installing the coupling or actuator onto the valve.

## 5. Removal from Valve

5.1 Eliminate electrical power supply and pneumatic supply

5.2 Release all pressure from controls and remove supply piping/wiring

5.3 Prepare actuator for lifting following guidelines in Section 3

5.4 Remove all mounting fasteners

5.5 Lift and remove actuator from valve

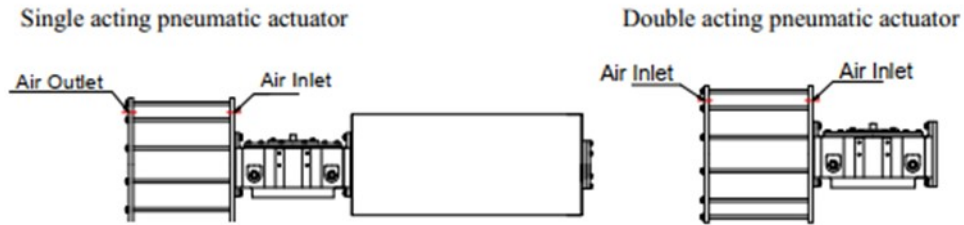
## 6. Tube & Fitting Installation

6.1 Tubing & Fitting installation shall be performed by trained personnel using industry best practices.

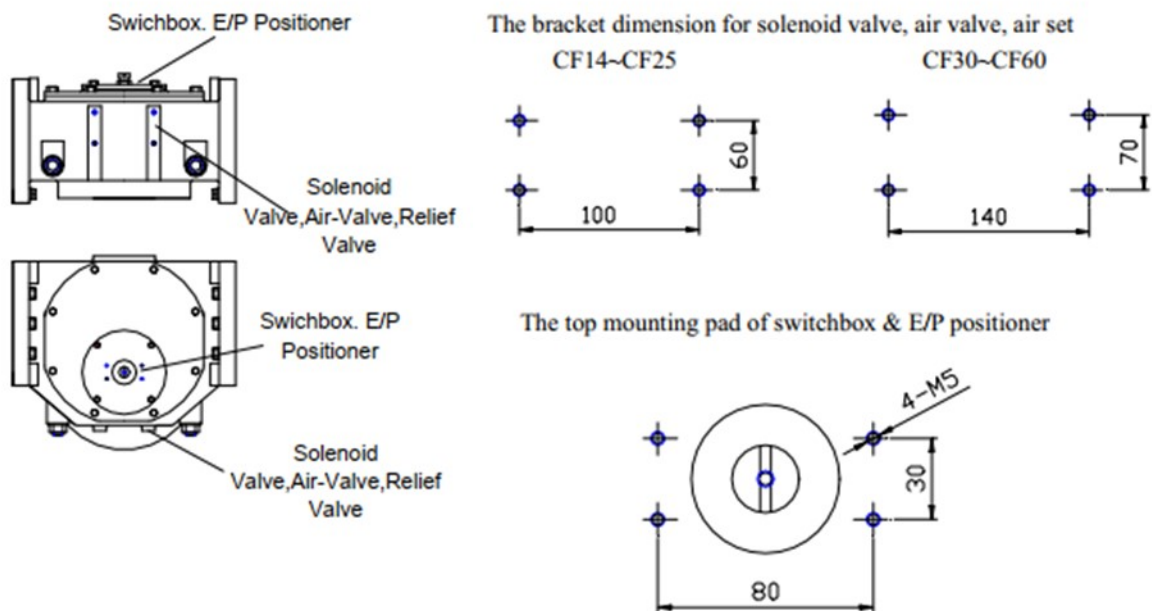
Air inlet size table:

Actuator size	200	250	300	350	400	450	500
Air inlet size	RC3/8"	RC1/2"	RC1/2"	RC1/2"	RC3/4"	RC3/4"	RC3/4"
Actuator size	550	600	700	800	900	1000	1100
Air inlet size	RC3/4"	RC1"	RC1"	RC1-1/2"	RC2"	RC2"	RC2"

**CALL US TODAY** 24 hours a day, 7 days a week



4-8: Dimensions and Positions of Accessories Installation



## 7. Operation

### 7.1 Auto-Operation

On/Off Control Pneumatic Actuated Valve:

- A) Valve opens when solenoid valve is energized (Fail Close Type)
- B) Valve closes when solenoid valve is de-energized (Fail Close Type)
- C) Valve closes when solenoid valve is energized (Fail Open Type)
- D) Valve opens when solenoid valve is de-energized (Fail Open Type)

**CALL US TODAY** 24 hours a day, 7 days a week

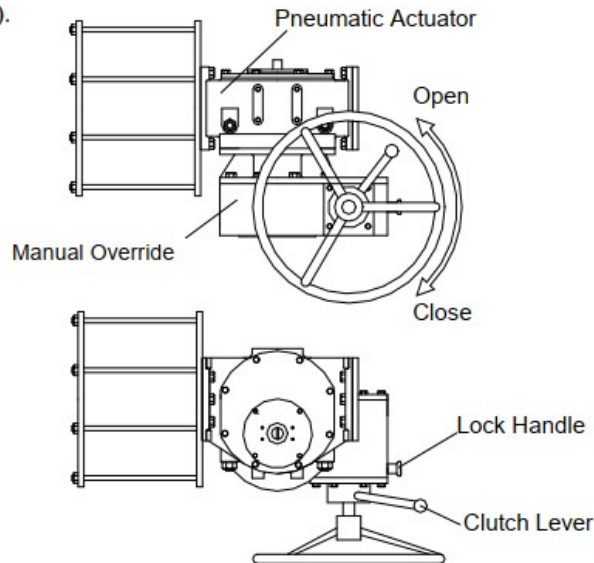
## Modulating Control Pneumatic Actuated Valve:

4-20mA DC signal to Electro-Pneumatic positioner (or 0.02~0.1Mpa to Pneumatic – Pneumatic positioner) the valve position is proportionally controlled by the input signal

### 7.2 Manual Override Option

7.2.1 Double Acting Pneumatic Actuator: declutchable worm gear manual override is used for CF14 & CF16 double acting pneumatic actuators,

(Refer right side figure 1).



Release air pressure. Operate worm gear as follows:

- 1) Pull out the locking handle
- 2) Rotate the clutch lever in anti-clockwise direction until engagement takes place.

To return the automatic mode:

- 1) Pull out the locking handle
- 2) Rotate the clutch lever in clockwise direction until engagement takes place.

### 7.2.2 Single Acting Pneumatic Jackscrew Operator

The jackscrew operator only available in CF14 & CF16 single acting actuators is a side mounted handwheel. Turning the hand wheel, the valve position is controlled by the trapezoid screw in spring case. Turn hand wheel clockwise to open, counter-clockwise to close.

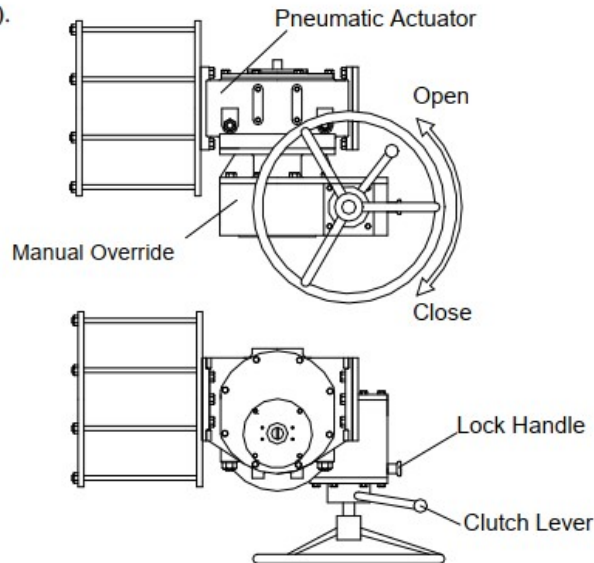
## Modulating Control Pneumatic Actuated Valve:

4-20mA DC signal to Electro-Pneumatic positioner (or 0.02~0.1Mpa to Pneumatic – Pneumatic positioner) the valve position is proportionally controlled by the input signal

### 7.2 Manual Override Option

7.2.1 Double Acting Pneumatic Actuator: declutchable worm gear manual override is used for CF14 & CF16 double acting pneumatic actuators,

(Refer right side figure 1).



Release air pressure. Operate worm gear as follows:

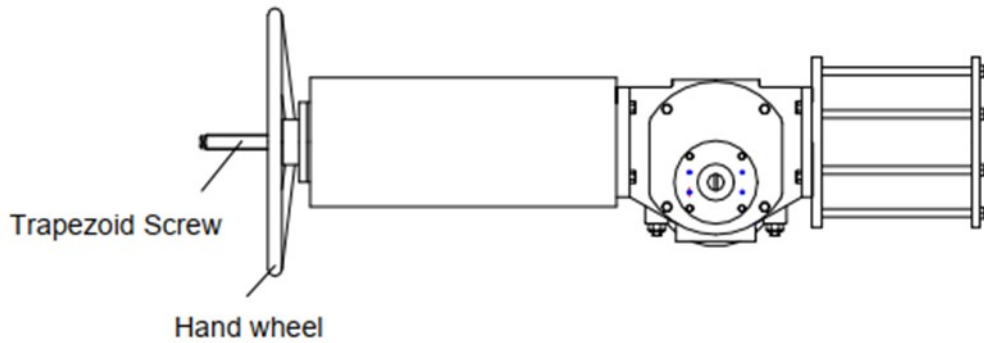
- 1) Pull out the locking handle
- 2) Rotate the clutch lever in anti-clockwise direction until engagement takes place.

To return the automatic mode:

- 1) Pull out the locking handle
- 2) Rotate the clutch lever in clockwise direction until engagement takes place.

### 7.2.2 Single Acting Pneumatic Jackscrew Operator

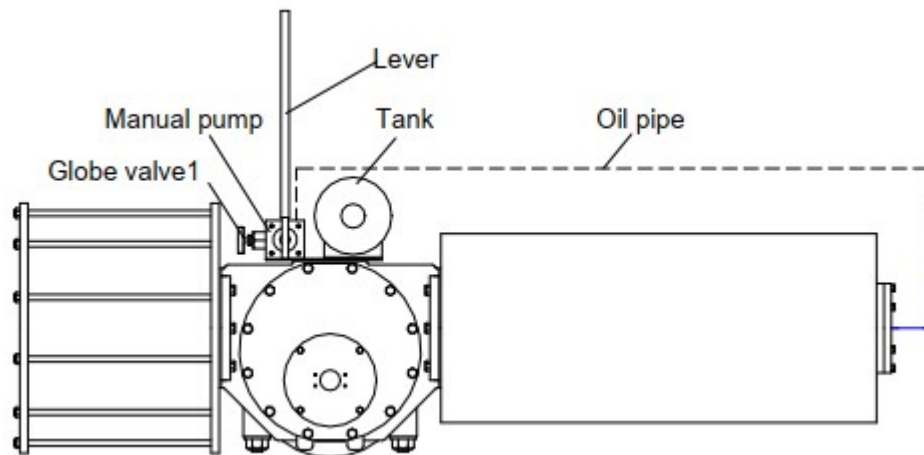
The jackscrew operator only available in CF14 & CF16 single acting actuators is a side mounted handwheel. Turning the hand wheel, the valve position is controlled by the trapezoid screw in spring case. Turn hand wheel clockwise to open, counter-clockwise to close.



After manual operation, return to original position so to ensure auto-operation can be resumed. Avoid fully removing integral trapezoid screw, the valve open & close position will be influenced if the screw is positioned incorrectly.

#### 7.2.2.2 Hydraulic Manual Override

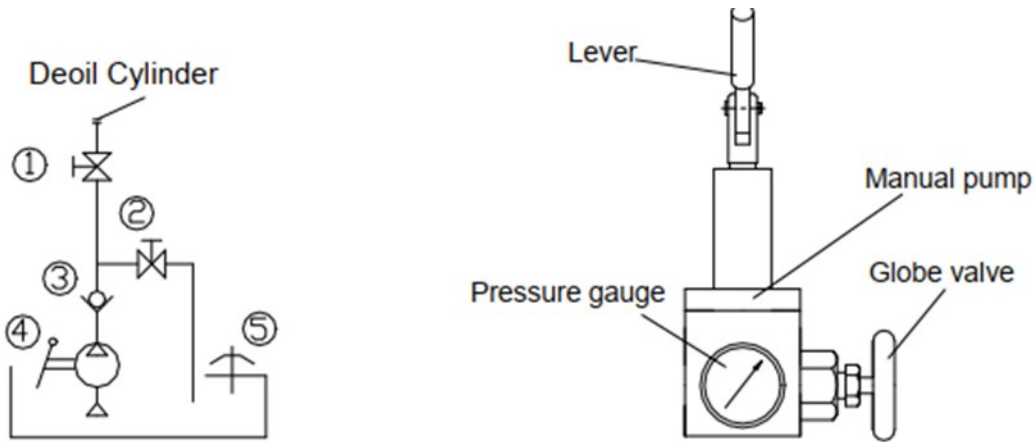
The hydraulic manual override is used for CF25 through CF60. The hydraulic manual override is an integral device which consists of a manual pump, tank, globe valve and check valve. The major parts as follows:



The Operation of Hydraulic Manual Override::

- Close globe valve
- Pump using lever handle until valve cycles as required.
- When returning to Auto-Operation: Open the globe valve to return to fail position.

**CALL US TODAY** 24 hours a day, 7 days a week



### NOTE:

Do not rotate the handwheel or operate lever if the manual override is not required or engaged

## 8. Stroke Adjustment

The stroke adjustment is available from 80° to 100° of travel by adjusting the open and close position bolts as per below:

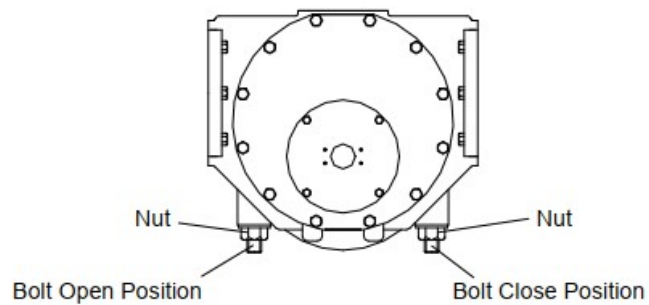
Loosen Nut on the open/close bolt

Adjust as needed:

Loosen = Increase travel

Tighten = Decrease Travel

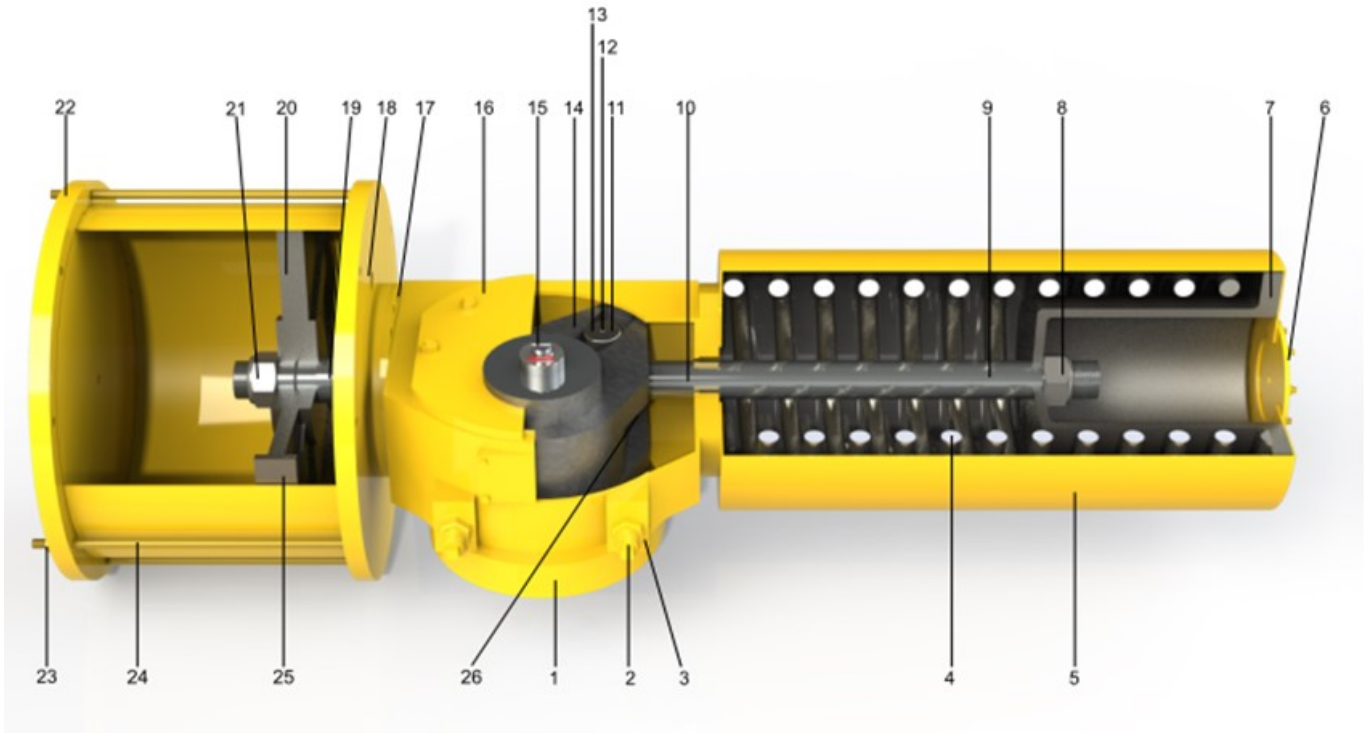
Tighten Nut on the open/close bolt to set the position



**CALL US TODAY** 24 hours a day, 7 days a week



## Assembly Drawing & Parts List



No.	Name	Material
1	Body	Ductile Iron
2	Adjust Stud	Alloy Steel
3	Nut	2H
4	Spring	Alloy Steel
5	Spring Case	Carbon Steel
6	Cover Plate	Carbon Steel
7	Spring Seat	Carbon Steel
8	Nut	2H
9	Tension Rod	Alloy Steel
10	Sliding Bearing	Metal +TFE
11	Roller	Alloy Steel
12	Slider Bearing	Metal +TFE
13	Pin	Alloy Steel
14	Yoke	Carbon Steel
15	Drive Shaft	Alloy Steel
16	Body Cap	Ductile Iron
17	Bolting	Carbon Steel
18	Adapter plate	Ductile Iron
19	O ring	NBR
20	Piston	Ductile Iron
21	Nut	2H
22	End Cap	Ductile Iron
23	Nut	2H
24	Body Screw	Alloy Steel
25	O ring seals	NBR
26	Guide Block	Ductile Iron

**CALL US TODAY** 24 hours a day, 7 days a week

## 9. Major Overhaul (including Seal Replacement)

Work must be completed by Weir authorized service provider.

## 10. Troubleshooting

Issue	Possible Cause(s)	Corrective Action
Actuator not functioning	Insufficient supply pressure	Ensure supply pressure is sufficient as per catalog to cycle actuator.
	Loss of control power	Ensure power is live at source and at solenoid/positioner.
	Mechanical function of valve or actuator	If both supply pressure and control power are sufficient consult valve manufacturer and Weir service to perform further troubleshooting.
Valve not fully stroking	Stops incorrectly set	Re-adjust stops as outlined in Section 8
	Lack of supply pressure	Ensure supply pressure is sufficient as per catalog to cycle actuator.
	Valve blocked or unable to fully stroke	Consult valve manufacturer
Valve Leakage	Stops incorrectly set	Re-adjust stops as outlined in Section 8
	Valve seat or seal issues	Consult valve manufacturer
Actuator Leakage	Worn Seals	Contact Weir USA
	Loose or improper connections	Ensure all supply fitting connections are sufficiently tight and correctly sealed
Actuator Cycle Time too fast/slow	Incorrect supply pressure	Ensure supply pressure is correct for application as per catalog info.
	Controls adjustment required	Ensure any regulators, speed controls, etc. are adjusted correctly to achieve desired open/closing times.

**CALL US TODAY** 24 hours a day, 7 days a week

# INSTRUCTIONAL & MAINTENANCE MANUAL WC-CF SERIES PNEUMATIC ACTUATOR



On Site

Help Desk

#WEIRHERE

CONTACT NOW 24/7

toll free 1.866.462.1910



info@weirusa.com



www.weirusa.com



Technical Library

SCAN ME 

www.weirusa.com

Version 4.0

## SOLUTIONS FOR YOUR COMPANY NEEDS - **WORLD WIDE SHIPPING**

- **HELP DESK** -

FOR YOUR SUPPORT AND SERVICE

**24 hours a day, 7 days a week****NO CHARGE ON CALLS SERVICE**

We offer technical assistance, product  
knowledge, and reliable trouble shooting

Brochures/Maintenance info available online [www.weirusa.com](http://www.weirusa.com)

Head Office:

7596 Wagner RD NW

Edmonton, Alberta CANADA T6E 5B2

info@weirusa.com / [www.weirusa.com](http://www.weirusa.com)

1.866.462.1910 Toll Free

780.462.1910 ph | 780.462.1959 fax