



# PRODUCT GUIDE - WC QUICK EXHAUST VALVE -



**EXPECT QUALITY AND RELIABILITY**  
using our brand name **QUICK EXHAUST VALVE**

Version 3.0

### Head Office:



7596 Wagner RD NW  
Edmonton , Alberta CANADA T6E 5B2  
info@weirusa.com / www.weirusa.com

1.866.462.1910 Toll Free  
780.462.1910 ph | 780.462.1959 fax



# Weir USA Inc.

**DOMESTIC PRODUCTS MADE IN NORTH AMERICA**  
**Details are the difference between ordinary and EXCELLENCE**



Product Rendering

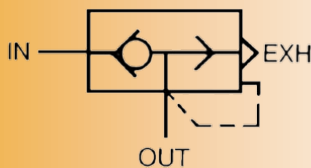
## QUICK EXHAUST

Constructed from lightweight aluminum alloy, the housing of this product boasts a sleek and clean surface. It facilitates faster evacuation of power gas from pneumatic actuators, enhancing overall efficiency.

### Application

- High exhaust characteristics
- Port size range from 1/8" to 3/4"
- High flow capacity
- Compact and light weight
- Low differential pressure

JIS Symbol



**Solutions for your  
company needs**

## PERFORMANCE SPECIFICATIONS

Body size		
1	1/8	
2	1/4	
3	3/8	
5	3/4	

Type		
Symbol	Type	Model
0	Diaphragm	AQ2 to AQ5
5	Lip	AQ1 Only

Port size		
Port size	Applicable series	
M5	M5 x 0.8	AQ1500
01	1/8	AQ1510, 2000
02	1/4	AQ2000, 3000
03	3/8	AQ3000
04	1/2	
06	3/4	AQ5000

Port Thread		
Nil	M5, Rc	
N	NPT	
F	G	

Body size for AQ15□□		
0	M5 x 0.8	
1	1/8	

Note) "AQ15□□" only

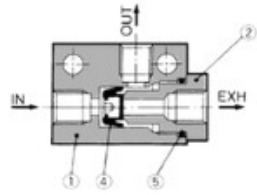
### Specifications

Fluid	-	Air (psi)
Proof Pressure	-	217.5
Maximum Operating Pressure	AQ1510	101.5
	AQ2000 to 5000	145
Minimum Operating Pressure	AQ1510	14.5
	AQ2000 to 5000	7.25
Ambient and Fluid Temperature	-40°F to 140°F	

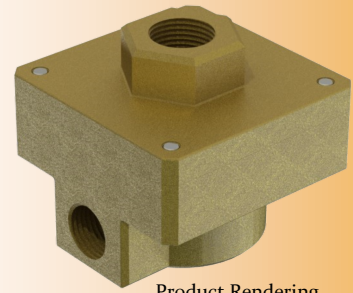
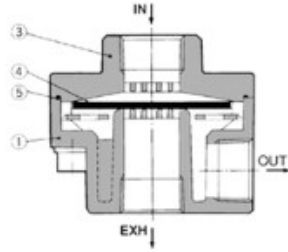
Weir offers technical consulting and total end to end solution.

Model	Port Size	Effective Area (in <sup>2</sup> )		Weight (oz.)
		In >> OUT	OUT >> EXH	
AQ1500-M5	M5x0.8	2	0.004	0.804
AQ1510-01	1/8	4	0.009	1.447
AQ2000-01	1/8	25	0.039	3.537
AQ2000-02	1/4	35	0.062	3.376
AQ3000-02	1/4	40	0.065	6.912
AQ3000-03	3/8	60	0.109	6.591
AQ5000-04	1/2	105	0.178	22.184
AQ5000-06	3/4	135	0.279	20.898

AQ1500/1510



AQ2000/3000/5000



Product Rendering

## CONSTRUCTION

### Component Parts

No.	Description	Material/Model		
		AQ1500	AQ1510	AQ2000/3000/5000
①	Body	Zinc die casted	Zinc die casted	Aluminum die casted
②	Guide	Brass	Brass	—
③	Cover	—	—	Aluminum die casted

### Replacement Parts

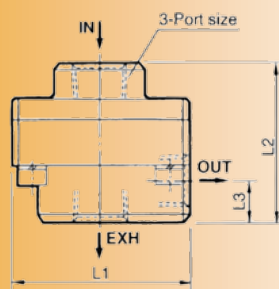
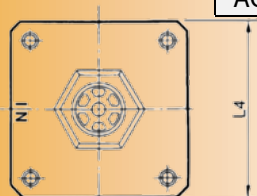
No.	Description	Material	Part No.				
			AQ1500	AQ1510	AQ2000	AQ3000	AQ5000
④	Valve	NBR	30083	30093	30073	30053	30063
⑤	O-ring	NBR	9 x 7 x 1	JISB2401P-7	CA40-1601	CA50-1602	30066

Model	Port Size	L1	L2	L3	L4
AQ2000	1/8, 1/4	1.77	1.57	0.39	1.77
AQ3000	1/4, 3/8	2.20	1.97	0.49	2.20
AQ5000	1/2, 3/4	3.39	2.95	0.71	3.35

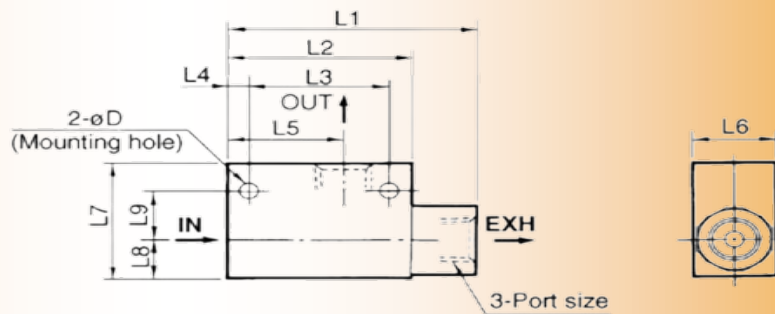
## DIMENSIONS

AQ2000/3000/5000

Model	Port Size	L1	L2	L3	L4	L5	L6	L7	L8	L9	D
AQ1500	M5x0.8	0.91	0.79	0.55	0.12	0.49	0.47	0.59	0.22	0.26	0.12
AQ1510	1/8	1.77	1.3	0.98	0.16	0.83	0.59	0.98	0.31	0.43	0.17



AQ1500/1510



# PRODUCT GUIDE

## WEIR WC QUICK EXHAUST VALVE



**SOLUTIONS FOR YOUR COMPANY NEEDS - WORLD WIDE SHIPPING**



**- HELP DESK -**

**FOR YOUR SUPPORT AND SERVICE**

**24 hours a day, 7 days a week**

**NO CHARGE ON CALLS SERVICE**

**We offer technical assistance, product knowledge, and reliable trouble shooting**

Brochures/Maintenance info available online [www.weirusa.com](http://www.weirusa.com)



**Head Office:**

7596 Wagner RD NW

Edmonton, Alberta CANADA T6E 5B2

[info@weirusa.com](mailto:info@weirusa.com) / [www.weirusa.com](http://www.weirusa.com)

**1.866.462.1910 Toll Free**

**780.462.1910 ph | 780.462.1959 fax**