

WEIR CONCEPTS INC.

PRODUCT GUIDE

- WCM CHAINWHEELS -



EXPECT QUALITY AND RELIABILITY

using our brand name CHAINWHEELS

~ WARRANTY AND EXCHANGE PROGRAM ~

 **Manufactured at Weir Concepts Inc.** 



7596 Wagner RD NW

Edmonton , Alberta

CANADA T6E 5B2

780.462.1910 ph

780.462.1959 fax

info@weirconcepts.com

www.weirconcepts.com

Version 3.0

MADE IN ALBERTA, CANADA PRODUCTS

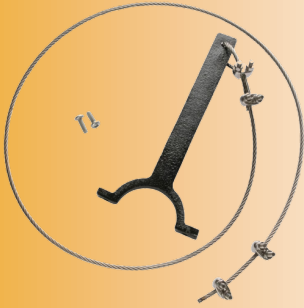
Manufactured and assembled at our Edmonton based facility

DETAILS ARE THE DIFFERENCE BETWEEN ORDINARY AND EXCELLENCE

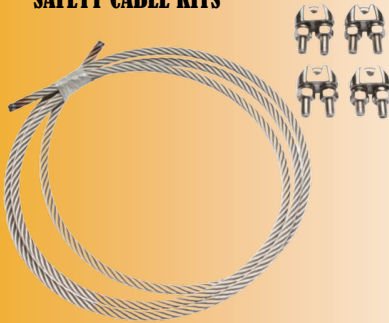
ATTACHMENT SETS



SAFETY CAP KITS



SAFETY CABLE KITS



LOCK-OUT / TAG-OUT SYSTEM



CUSTOM HANDLE CHAIN DROP

ACCESSORIES

ATTACHMENT SET as part of regular maintenance re-attach an existing chainwheel to a valve and wheel. Once a chainwheel is removed from the valve hand wheel, it is recommended that a new attachment set is used. **Available in zinc plated, carbon steel or stainless steel.**

SAFETY CAP KIT (1) used to convert chainwheels to safety wheels. The safety cap kit is a secondary attachment that reduces potential hazards of a falling valve hand wheel. Included with the set is a safety cap, 5' of 7x19 stainless steel wire with 4 stainless steel clamps, and fasteners required to attach the cap to the guide arm.

SAFETY CABLE KIT (2) used as a secondary attachment on non-safety wheels to reduce the potential falling hazard of a falling valve hand wheel. The cable is fastened to the yoke of the chain guide and attaches to a nearby pipe or other secure object. Included in the kit is 7x19 stainless steel wire with 4 stainless steel clamps.

LOCK-OUT/TAG-OUT SYSTEM secures existing chainwheel against unauthorized use whenever product processing or downtime requires the valve not in operation. This system is used to prevent chainwheel operated valves being unintentionally opened or closed when they are required to be out of service. Comes complete with chain tube, lock, tag-out tag, and safety lock-out hasp.

CUSTOM T HANDLE CHAIN DROP economical custom built T handle style chain drop for use in out of reach areas. This option is economical on smaller valves for faster operation and no gear operator is required.

The WCM Chainwheel is economical and effective. Perfect for operating valves located at out of reach areas. The WCM Chainwheel will easily attach to the hand wheel of valves ranging from 2" to 36" in diameter.

THIS PRODUCT IS PROUDLY MANUFACTURED AT OUR EDMONTON BASED FACILITY

ACCESSORIES AVAILABLE





AVAILABLE IN ALUMINUM

STANDARD COMPONENTS:

- Chainwheel
- Guide arm and cap
- Stainless steel attachment set for clamping to the valve hand wheel
- Instructions for installing the chainwheel to the hand wheel of the valve

SAFETY WHEEL COMPONENTS:

- As standard components above
- 5 feet of 7x19 stainless steel wire with 4 stainless steel clamps

POCKETWHEEL COMPONENTS:

- As standard components above

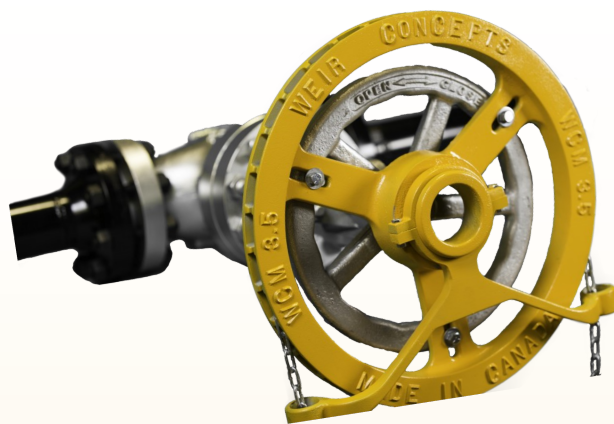
MADE IN CANADA Products

Manufactured and assembled at our Edmonton based facility



POCKETWHEEL

Designed to accommodate applications where straight link welded chain is a requirement. The chain channel is designed to accept every other link of straight Link chain.



SAFETYWHEELS

Provide a secondary attachment to reduce the potential hazard of a falling valve hand wheel. Safety wheels use stainless steel wire to attach to nearby pipe (or other secure objects) for additional protection.

SAFETYWHEELS

Welded machine chain is designed for use on all pocketwheels. Every other link of straight link chain is accepted by the pocketwheel.



NOTE: Chain is provided in continuous lengths.

It is easily cut, reconnected in the field, and can fit exact specifications.

To order give Chainwheel size number, and the number of feet of chain required.

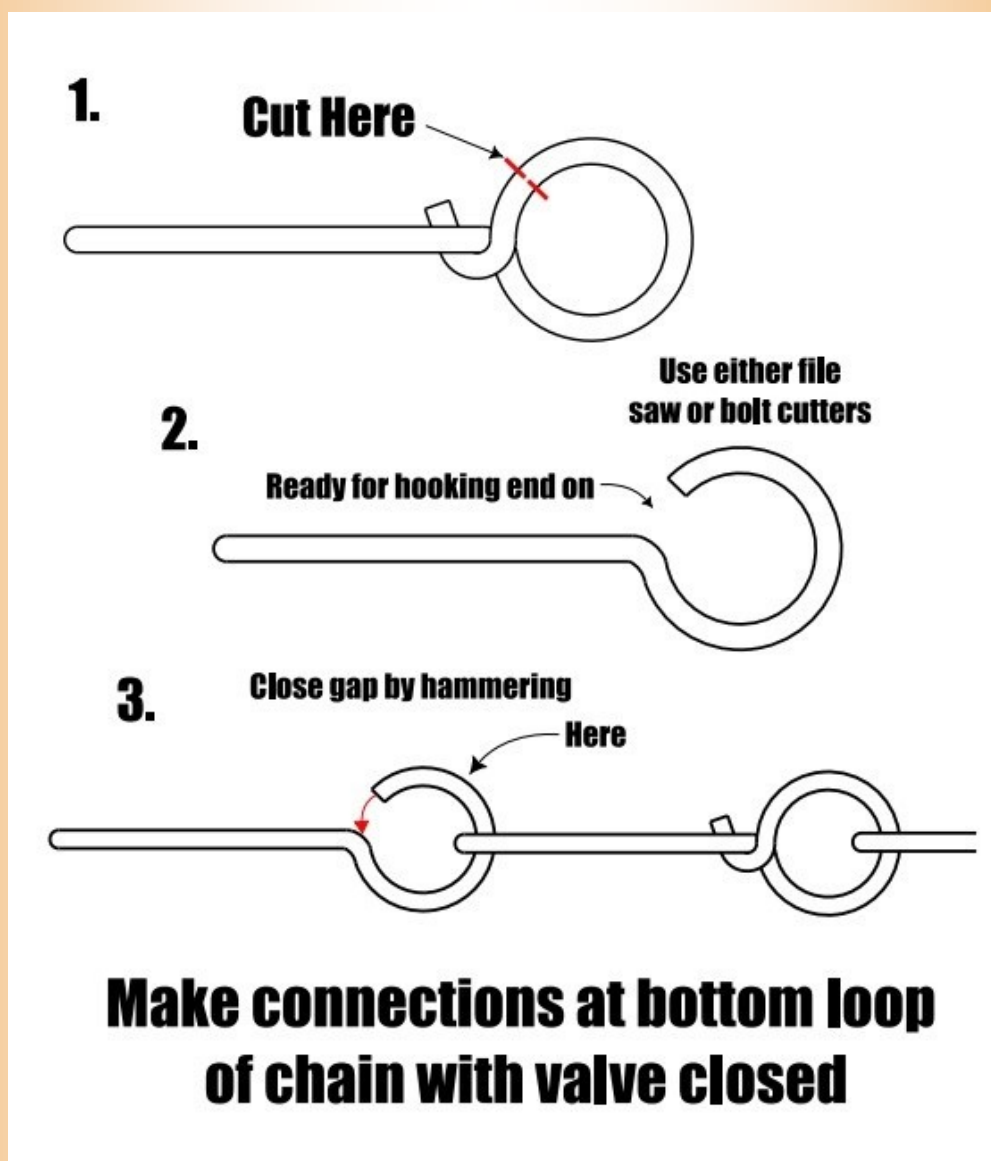
Available in hot dipped galvanized and stainless steel

WCM CHAINWHEEL - TECHNICAL DATA

Selection of Chainwheels Operators						
Chain Wheel Size		Valve Handwheels Size (Inches)		Chain Size		Chainwheel Weights, lbs.
WCM 2.5		6.25 - 12.5		#1		6
WCM 3.0		12.75 - 15.5		#1		8
WCM 3.5		15.75 - 19		#1		13
WCM 4.0		19.25-22		#2		14
WCM 4.5		22 - 26		#2		18
WCM 5.0		26 - 30		#2		25

* #2 CHAIN DOES NOT REQUIRE MASTERLINKS—SEE LOCK LINK CONNECTOR INSTRUCTIONS

WCM CHAINWHEEL - #2 CHAIN INSTRUCTIONS



PRODUCT GUIDE

WEIR CONCEPTS WCM CHAINWHEELS



- HELP DESK -

FOR YOUR SUPPORT AND SERVICE

24 hours a day, 7 days a week

NO CHARGE ON CALLS SERVICE

We offer technical assistance, product knowledge, and reliable trouble shooting

Brochures/Maintenance info available online www.weirconcepts.com

HELP DESK EXPERTISE PROVIDED AT WEIR CONCEPTS

SOLUTIONS FOR YOUR COMPANY NEEDS

7596 Wagner RD NW

Edmonton, Alberta

CANADA, T6E 5B2

780.462.1910 ph

780.462.1959 fax

info@weirconcepts.com

www.weirconcepts.com

Version 3.0

